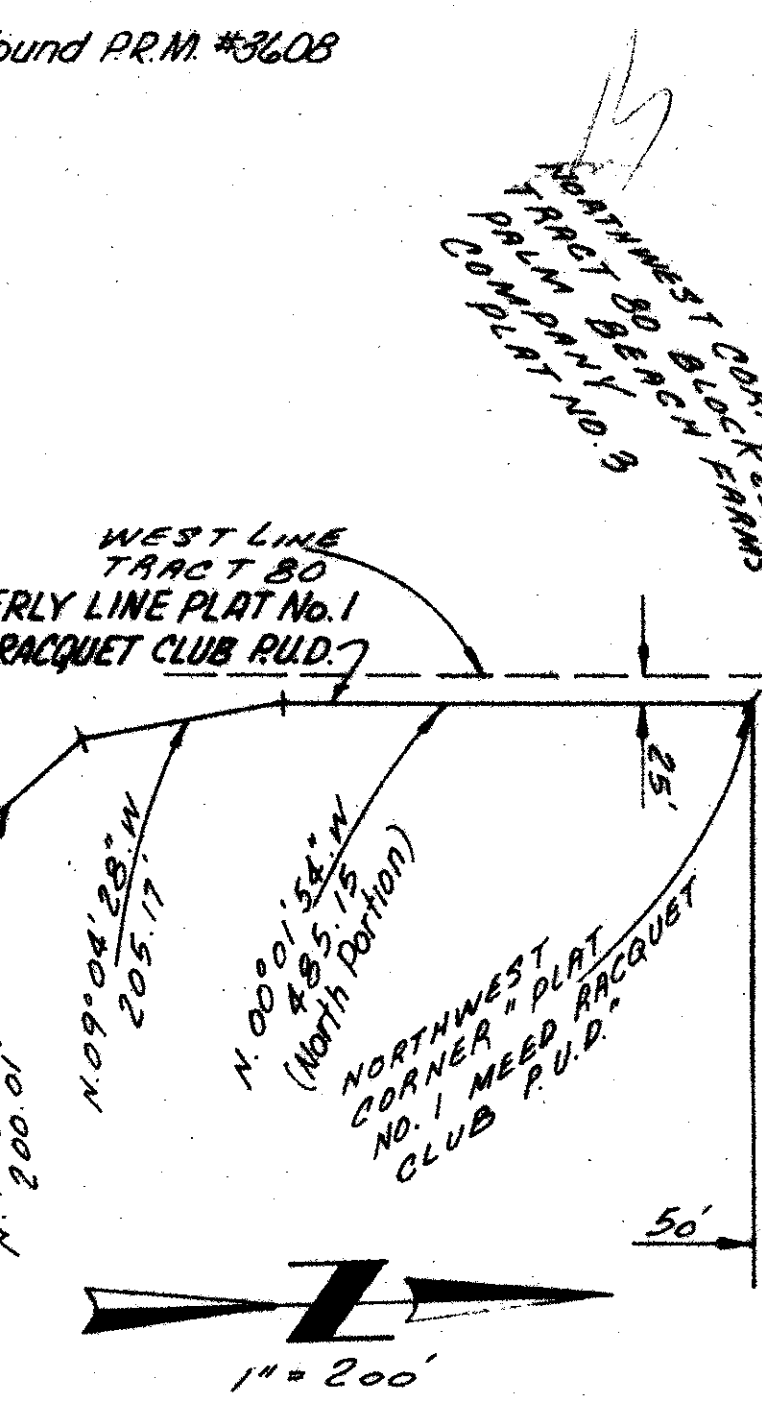
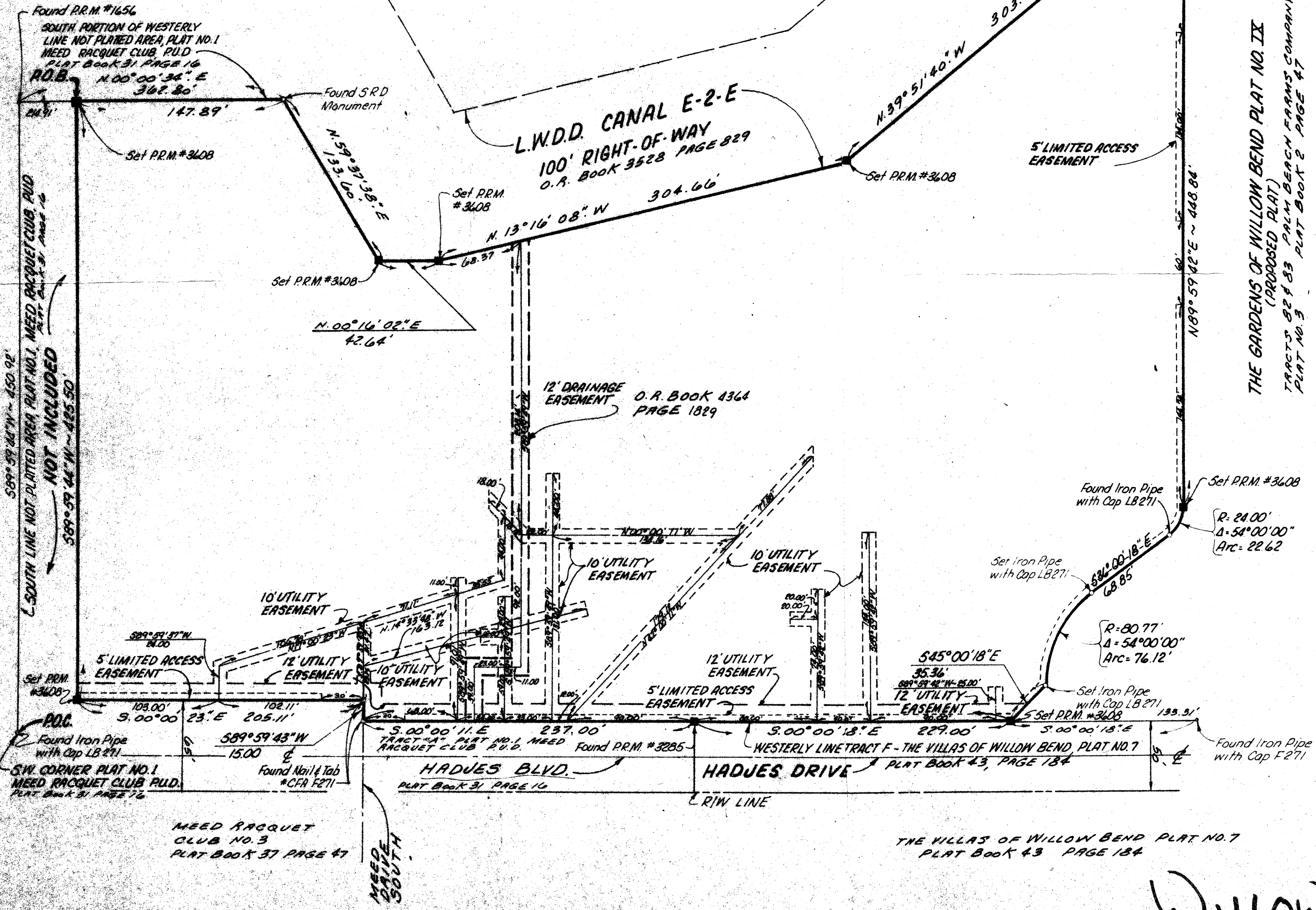
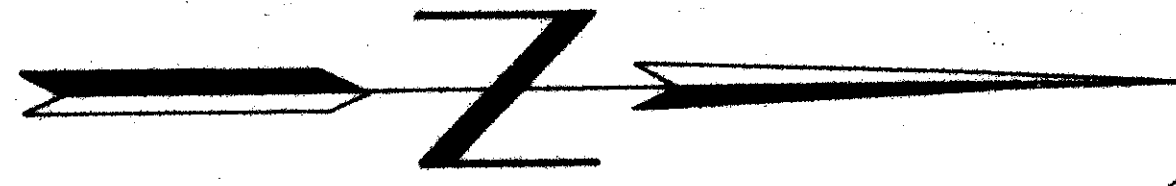
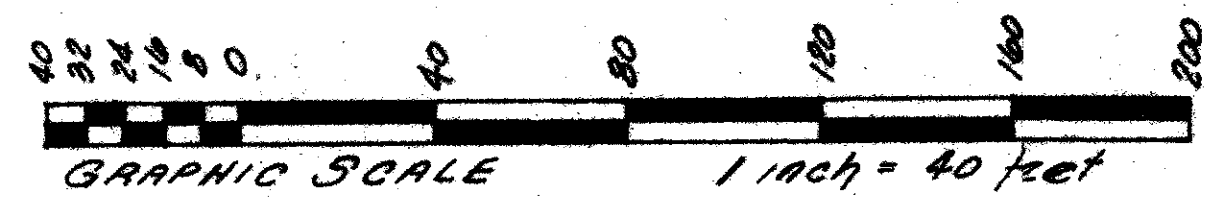


49/133

133

WILLOW BEND PLAT NO. X

BEING THE TENTH PLAT OF MEED RACQUET CLUB P.U.D.
SECTIONS 20, 21 AND 28 TOWNSHIP 44 SOUTH, RANGE 42 EAST
PALM BEACH COUNTY, FLORIDA
BEING A REPLAT OF PORTIONS OF TRACTS 82, 83, 110 AND 111, BLOCK 23
PALM BEACH FARMS COMPANY PLAT NO. 3 PLAT BOOK 2 PAGE 47



SURVEY NOTES:

1. Bearings as shown hereon are based upon an assumed bearing of North 00° 01' 54" West for the North portion of the Westerly Line Plat No. 1 Meed Racquet Club P.U.D. and all other bearings are relative to it.
2. ■ Indicates P.R.M. (Permanent Reference Monument)
3. Boundary Data Calculated from a Field Survey of the Subject Property.
4. D.E. Where shown indicates Drainage Easement.
5. U.E. Where shown indicates Utility Easement.
6. No Buildings or any kind of Construction shall be placed on Utility or Drainage Easements.
7. No Structures, Trees or Shrubs shall be placed on Drainage Easements.
8. Approval of Landscaping on Utility Easements other than water and Sewer shall be only with the approval of all Utilities occupying same.
9. Where drainage easements and utility easements cross, drainage easements shall have precedent.

0396-302

49/133

Willow Bend #10 SHEET 2 OF 2 SHEETS

THIS INSTRUMENT WAS PREPARED BY:
JOHN H. FITSCHEN P.L.S.
Craven Thompson & Associates, Inc.
5154 Okechobee Boulevard
West Palm Beach, Florida 33409

Rm/PUD
Div 3
42-44-20

DRAWING NUMBER

DRAWING NUMBER

DRAWING NUMBER

PLAN HOLD CORPORATION • IRVINE, CALIFORNIA
REGISTERED NUMBER 075248